



# Data Center BeLux Forum

What happens when IoT and P5G meets (in) the edge?





A close-up, slightly blurred photograph of a woman with dark hair, smiling warmly. The image has a soft, painterly quality. The text is overlaid on the lower half of her face.

societies become more equal,



# Did you know?

65% of the **Fortune Global 500** and 80% of the **Fortune Global 100** companies are our clients

If you did a google search, you likely used our network

**#1** in Network Service Provider according to Gartner and IDC

Hyperscalers & social media platforms run here for global reach

One of the top 3 in **Global Data Centers** according to IDC and TBR



Innovating Smart solutions for our clients

The first enterprise multi-country private 5G offering.

Delivered the largest connected digital stadium for Tour de France

Transforming how the Tour de France deliver data to fans across the world



150 year heritage of using technology for good

Helping our clients and the world to reach net-zero by 2030

Creating new ways of working for customers across the globe

Global leader in workplace transformation, architecting new ways of working that are hybrid, flexible and secure.

# Agenda:

## What happens when IoT and P5G meets (in) the edge?

### 1. The iNTTerconnected world

*Sensor to Cloud communication*

### 2. Private 5G

*The building blocks & Differentiators*

### 3. The Intelligent Edge

*Edge to multiCloud communication*

### 4. Questions?

*And answers!*

# Internet of Things

## Industry 4.0 – Smart Industry – The Digital Factory

*Industry 4.0 refers to a new phase in the Industrial Revolution that focuses heavily on interconnectivity, automation, machine learning, and real-time data*



18<sup>th</sup> Century

### Industry 1.0

Mechanical production powered by steam



19<sup>th</sup> Century

### Industry 2.0

Mass production lines and electricity



20<sup>th</sup> Century

### Industry 3.0

Automated production electronics & computers

## The connected car – car IoT

A **connected car** is one that has its own connection to the internet, that allows the car to share internet access and data with other devices inside and outside the car.



18<sup>th</sup> Century

Chair on wheels



18<sup>th</sup> Century

Car on wheels



18<sup>th</sup> Century

iPad on wheels

18<sup>th</sup> Century

Edge on wheels

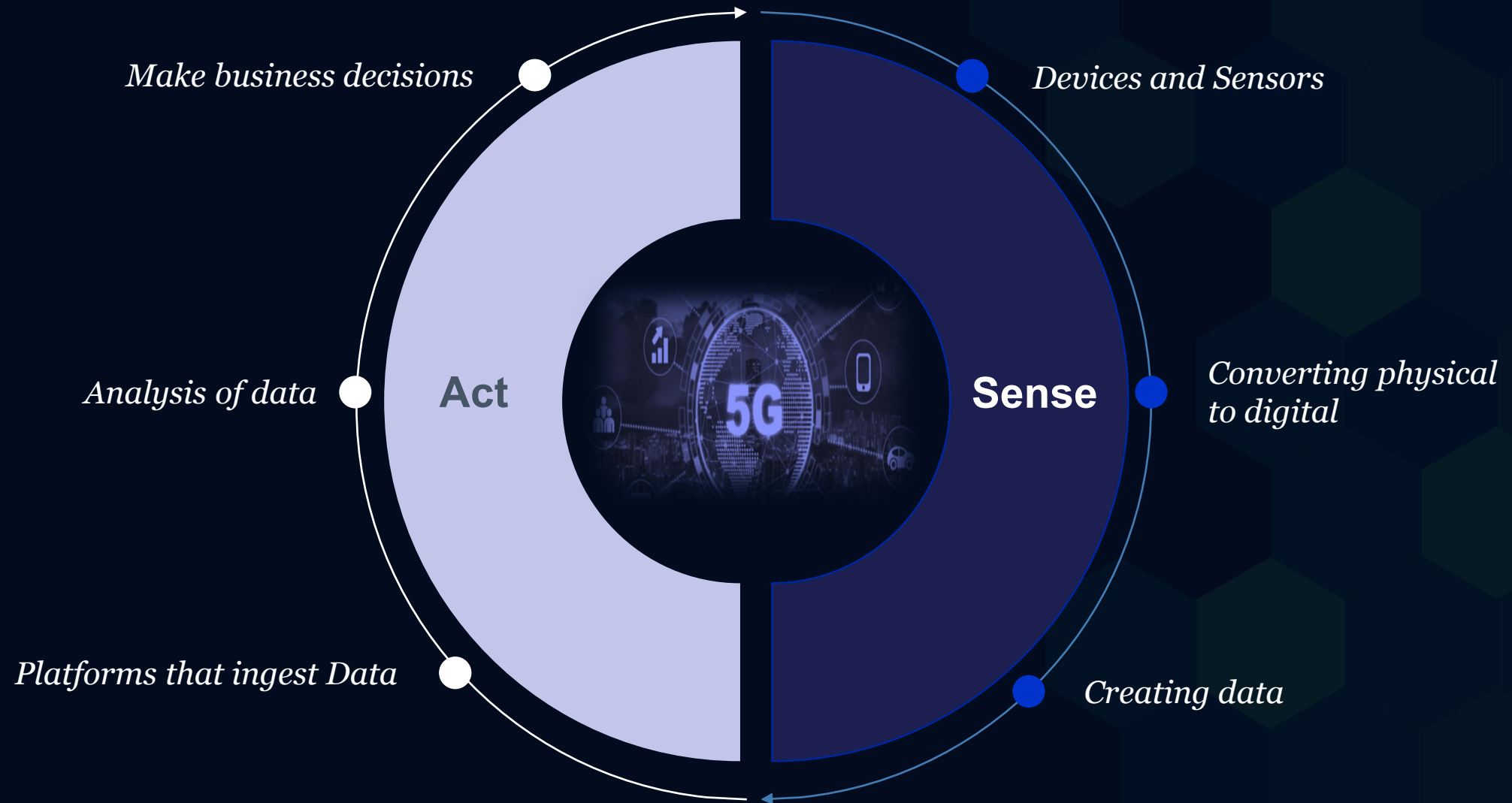


iNTTerconnected?



# Internet of Things

## *Simplistic model*



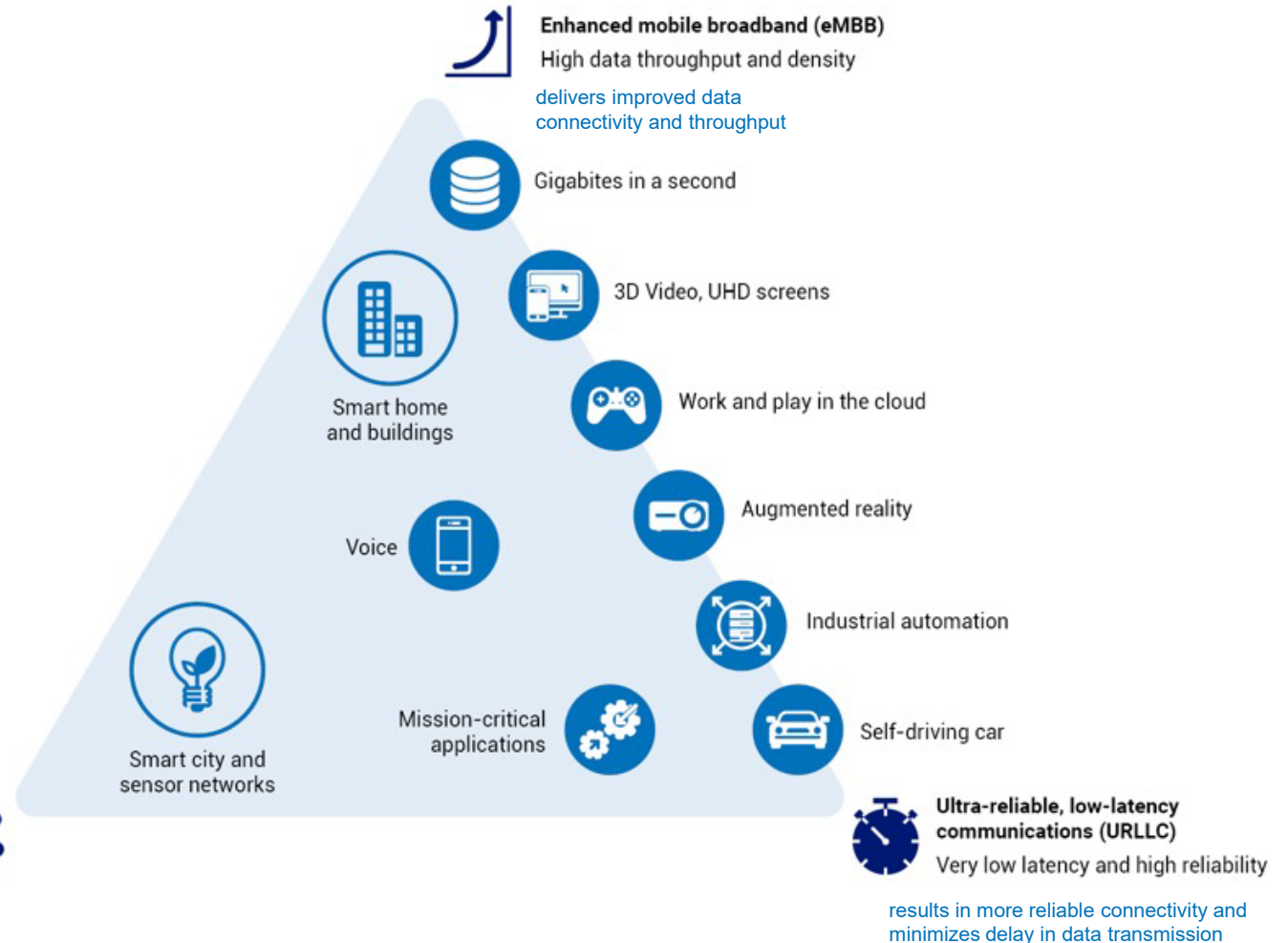
# What is 5G? An enabler for growth

The ability to handle a large density of devices transmitting large volumes of data enables enterprises to drive digitalization and decisively improve data-based business models.



- **New standard** for mobile communications
- Shift to **service-based architecture**
- Complete **software-defined** approach
- Designed to address **multiple use cases** in one network
- Improved **speed, density, reliability** and **latency**

**Massive machine-type communications (mMTC)**  
High density and low data rates  
offers connectivity for mission-critical and IoT applications





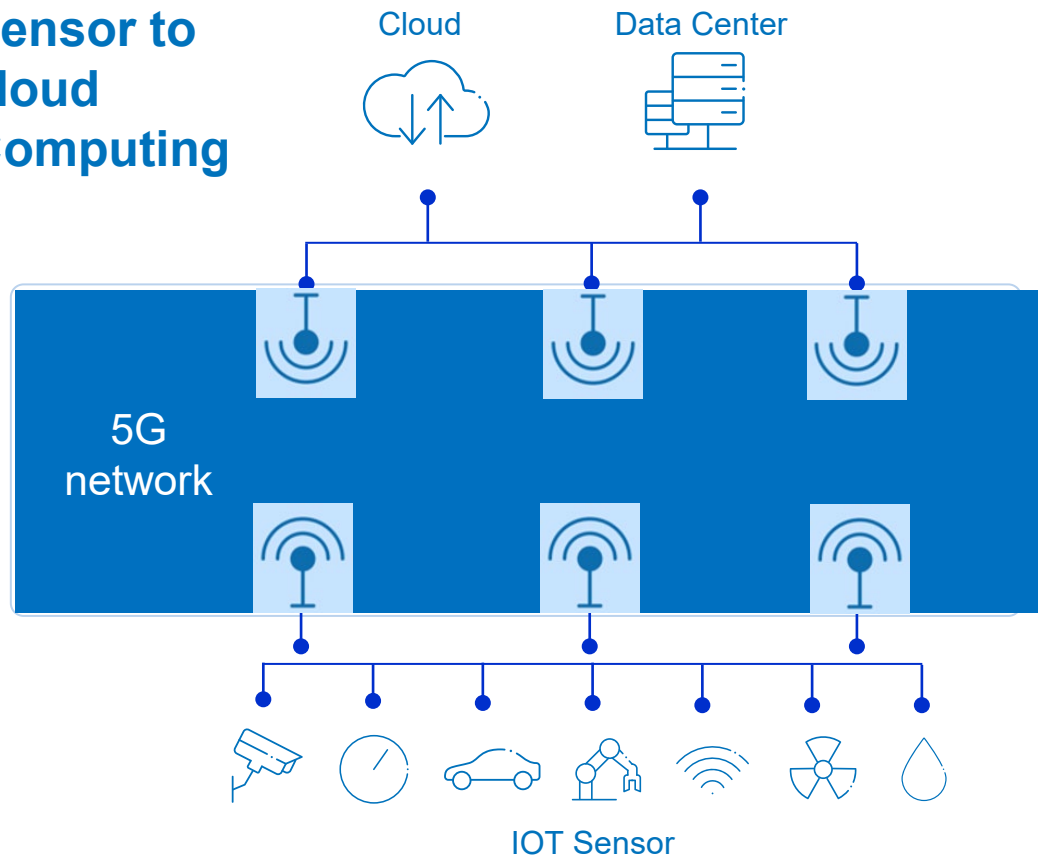
# What is 5G? An enabler for growth

One regulated umbrella protocol that can deal with others,  
that are using open frequencies

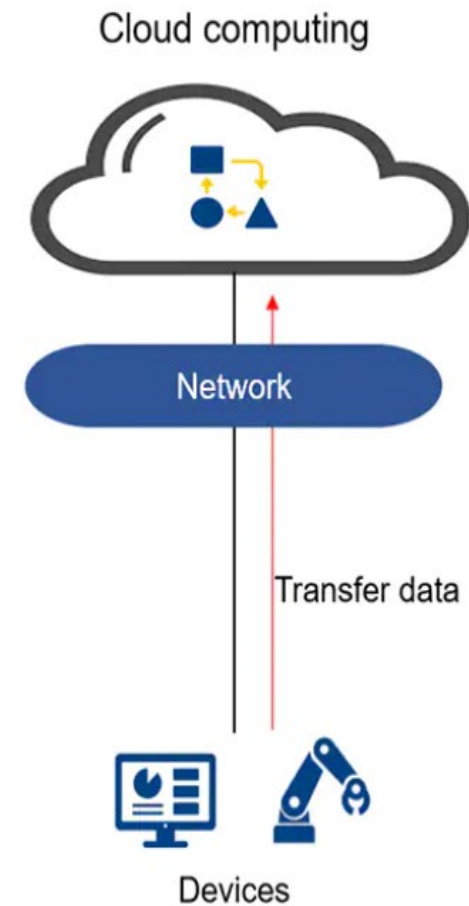


# the “iNTTerconnected” world

## Sensor to cloud Computing



Process data on cloud  
↓  
Heavy processing with  
ample resources





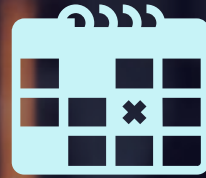
# Unlock new and innovative services for enterprises

The power of 5G, IoT and real-time AI will unlock new and innovative services for enterprises across the world to accelerate their transformation toward Industry 4.0.



**USD 110bn**

Private 5G networks spend will reach USD 25bn in 2026 and **USD 110bn in 2036.**



**2036**

● By **2036**, what is spent on enterprise cellular will be more than public cellular.



**13x**

**5G speeds will be 13 times higher than the average mobile connection by 2023.** The average 5G connection speed will reach 575 Mbps by 2023.

# Potential use cases to solve the business challenges



Preventative Maintenance

Forecasting and harvest predictions



OEE (Overall Equipment Efficiency)



Personnel Safety

Remote Monitoring



Condition-Based Maintenance



Asset Tracking & Management



Real-time Quality Detection





# NTT IoT Experience Examples\*

## Real Time Equipment Monitoring



## Fleet Predictive Maintenance



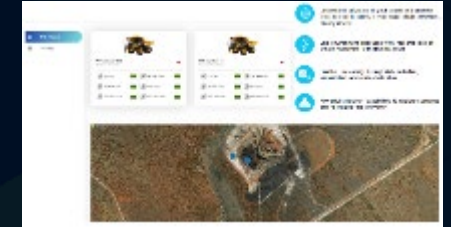
## Connected Car/Telematics



## Operator Behavior



## Worksite Asset Management



## Connected Factory/Digital Twin



## People Movement



## Asset Tracking/Movement



## Smart Cities Smart Campuses



## Smart Building/Smart Spaces



## IoT Connectivity in 180+ Destinations



## Connected Conservation



## Digitizing Tour de France



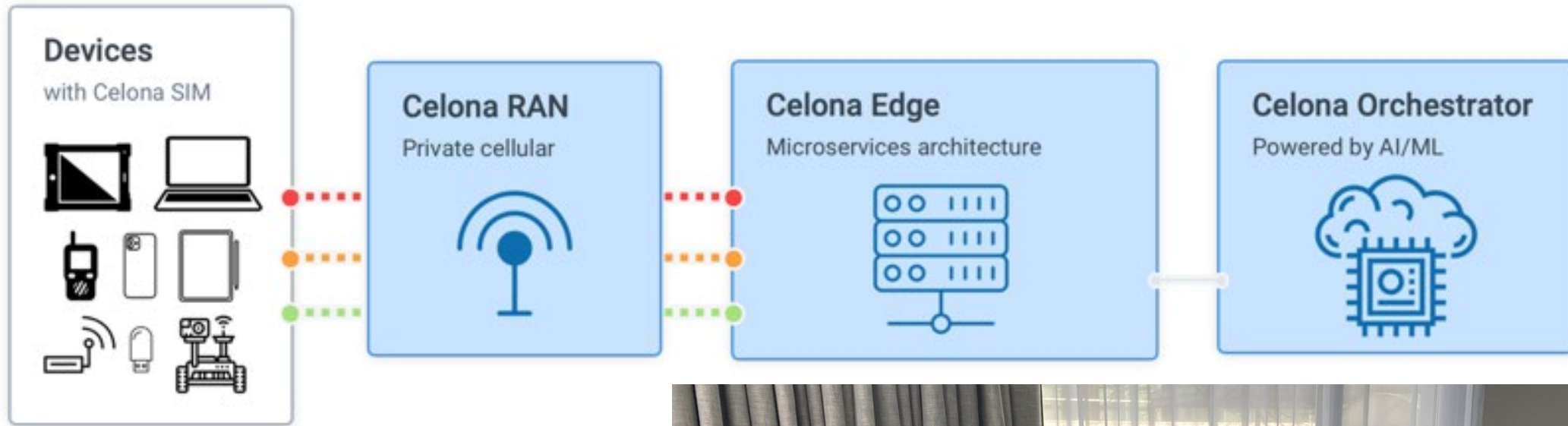
## Digitizing Indy Car



## AR/VR



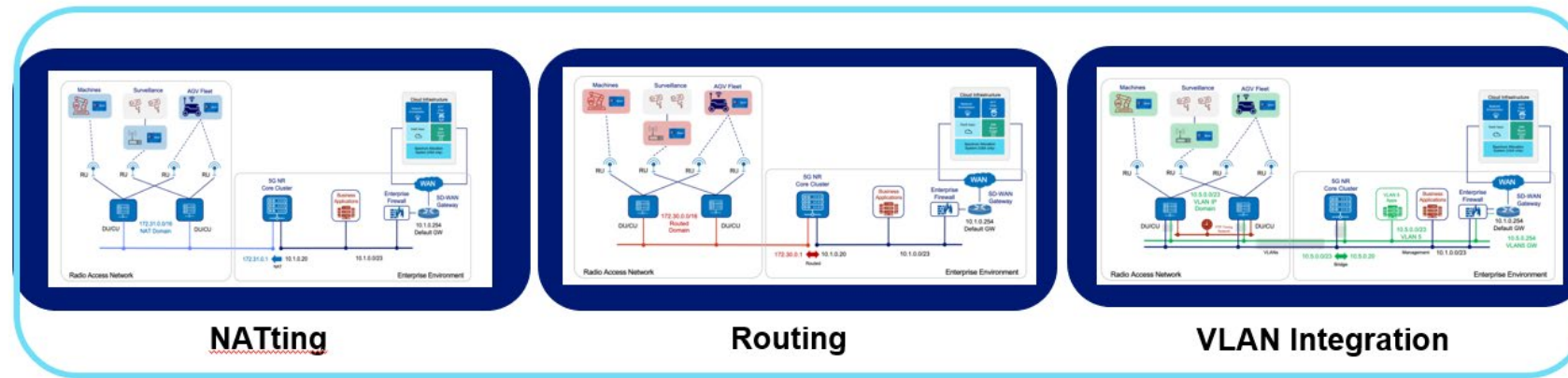
# The Private 5G concept



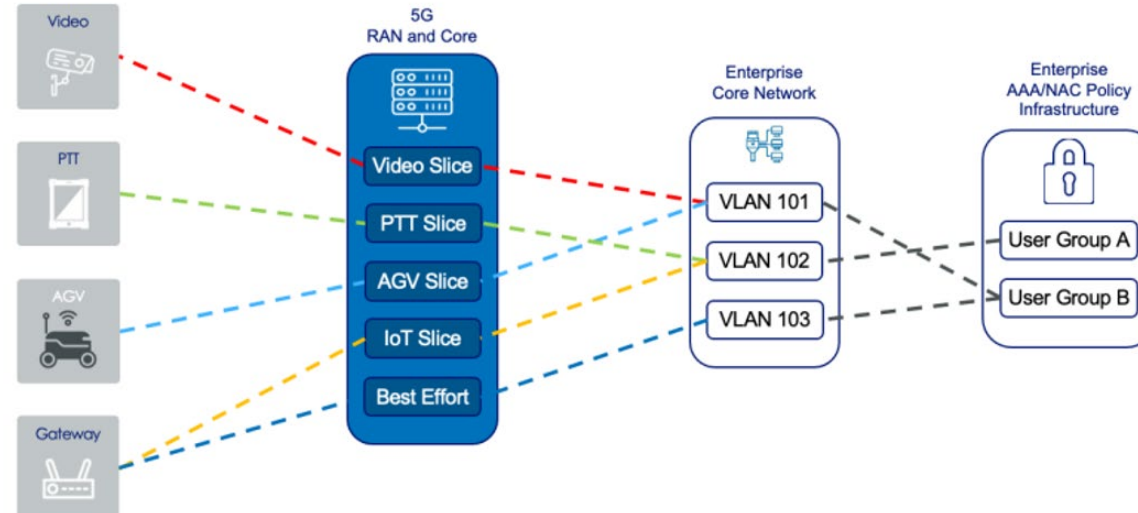


# Our P5G Differentiators

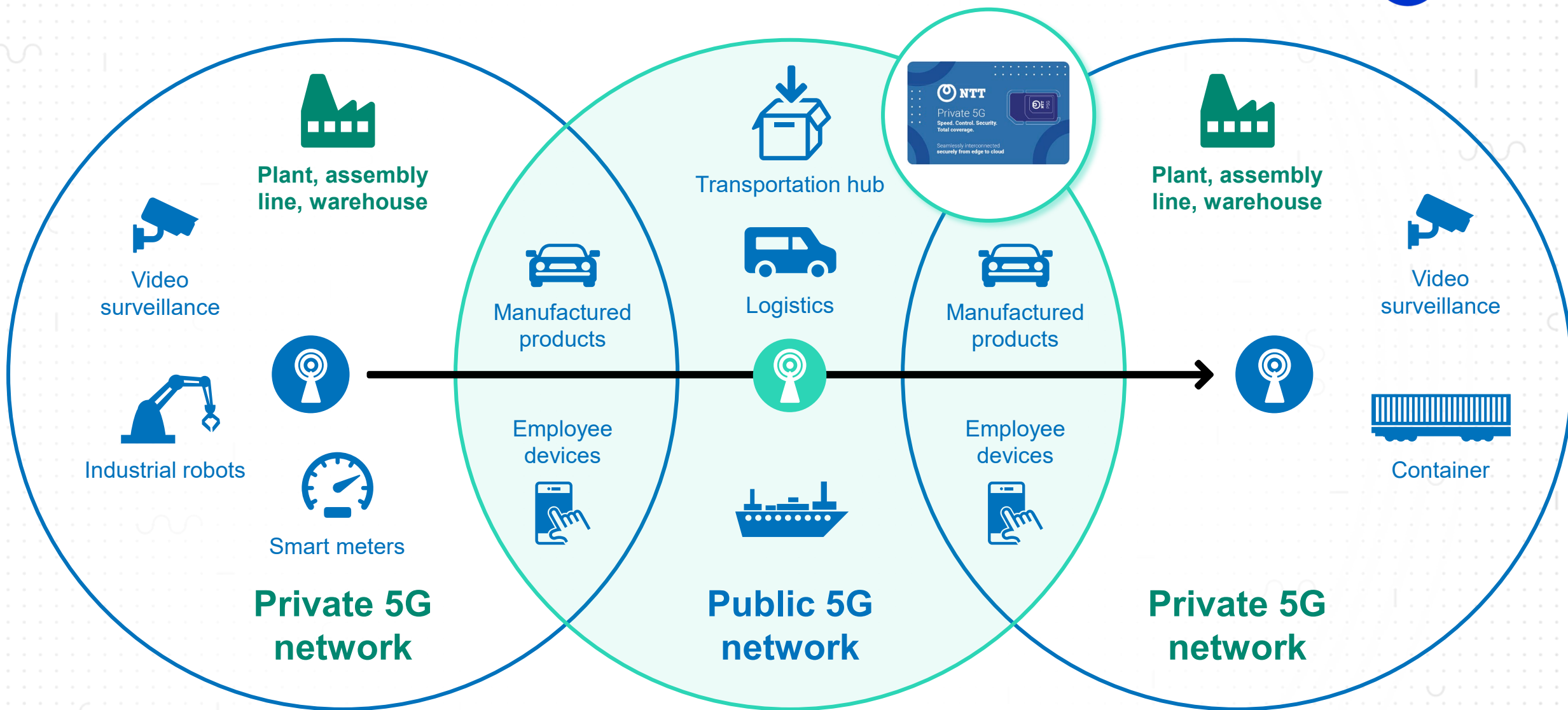
- Networking integration possibilities



- VLAN & QoS mappings



# Our complete enterprise 5G solution

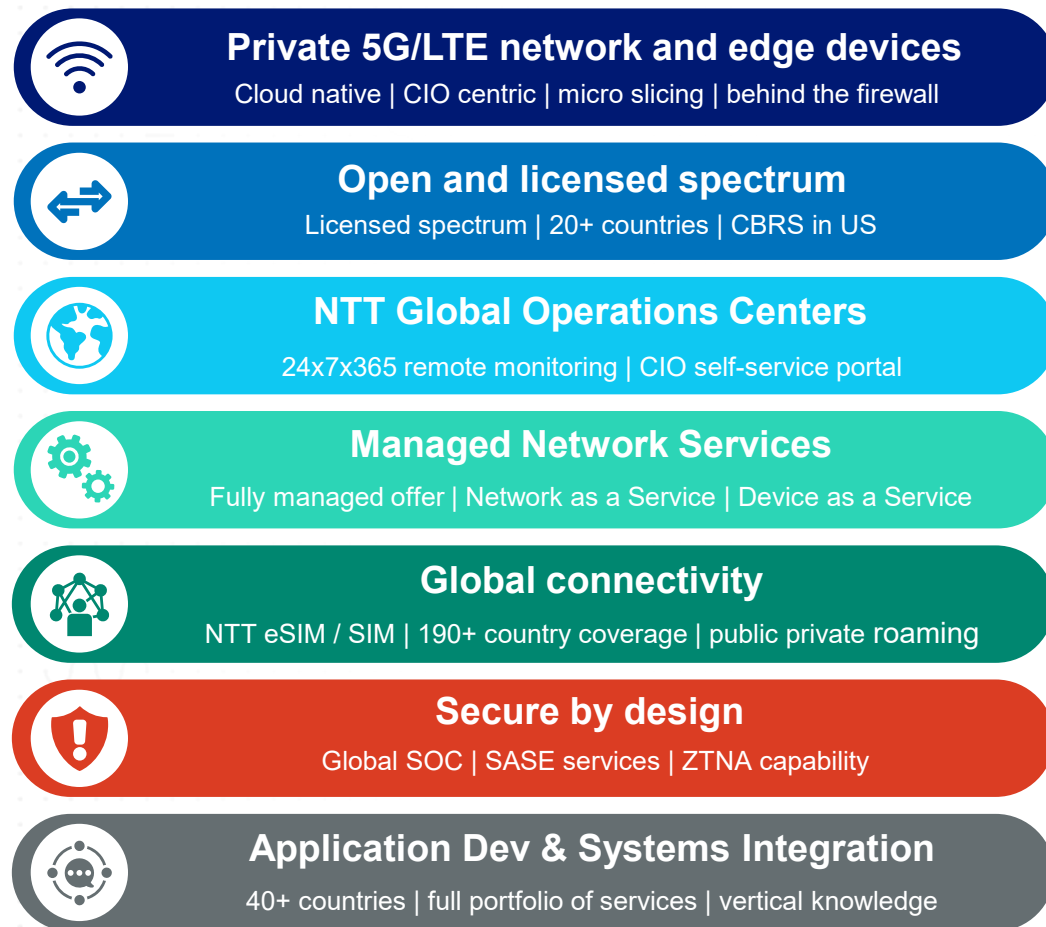


← Quality of service, network slicing, virtualized network and application infrastructure →

# Our Private 5G platform architecture



We provide the first commercially available, private LTE/5G network-as-a-service full stack solution delivered on-premises, at the edge, or as a cloud service, with flexible deployment options.



## Private 5G

An **end-to-end private 5G** solution for speed, control, security and coverage



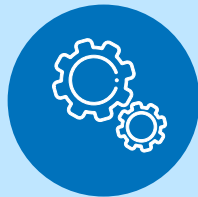


Businesses are  
shifting their focus  
to **Operational  
Technologies (OT)**  
from **IT**

# Challenges for today's businesses



**Reliable Connections and Low Latency** requirements hampers near real-time automation



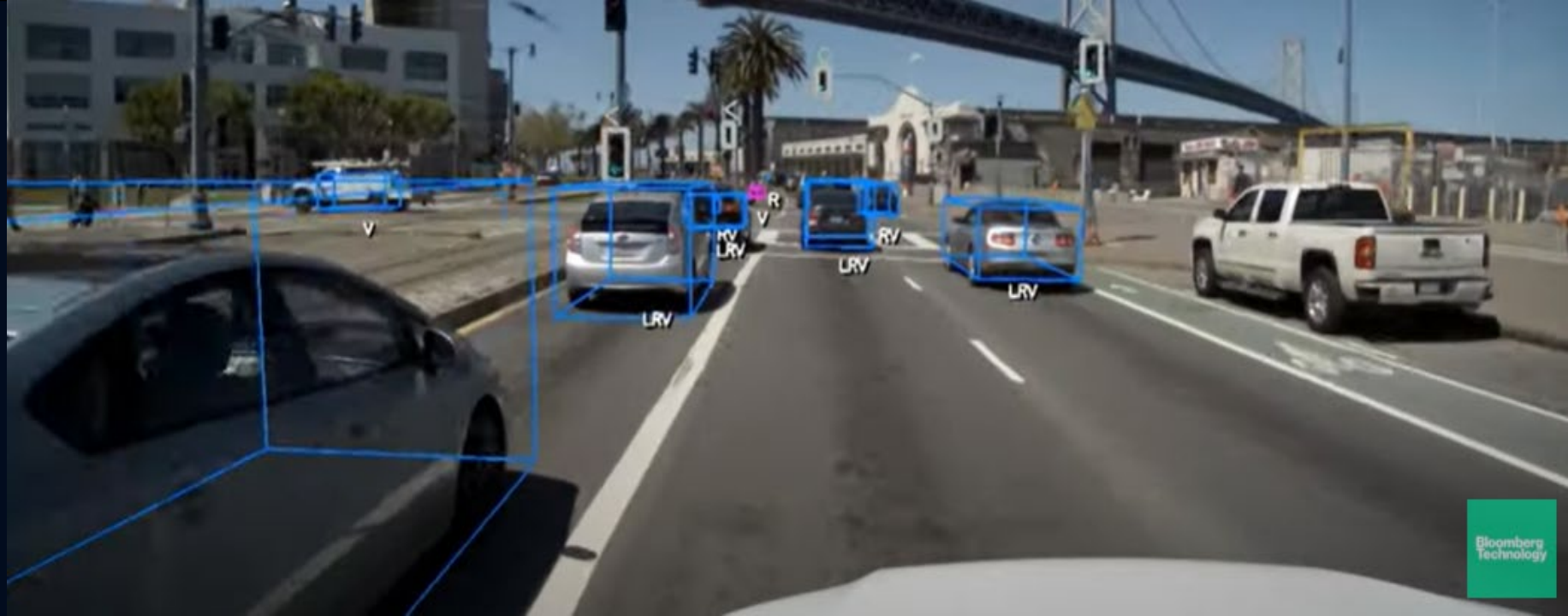
Large data **Bandwidth** use cases are expensive to store on the cloud



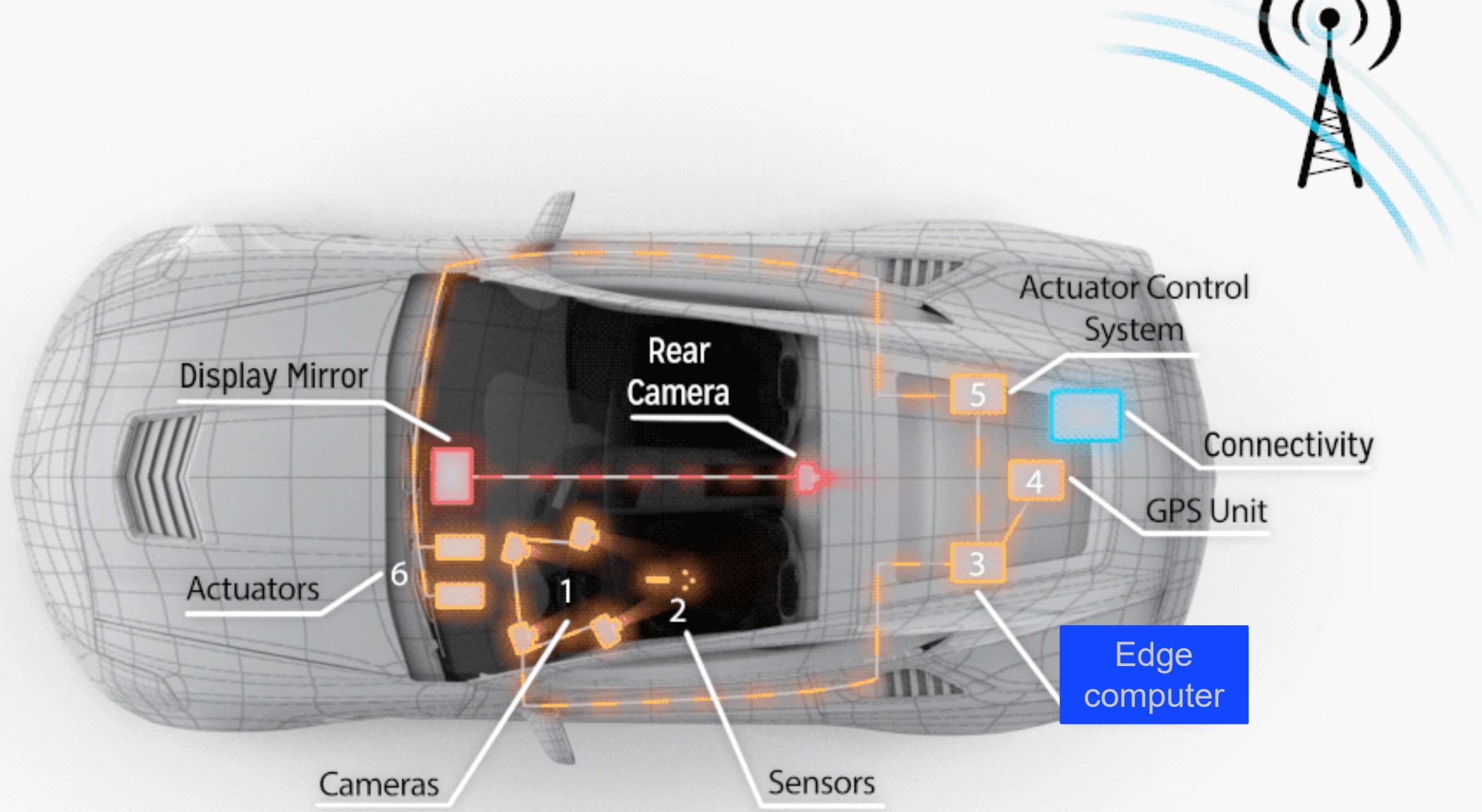
High availability is dependent on **third party end-user solutions**



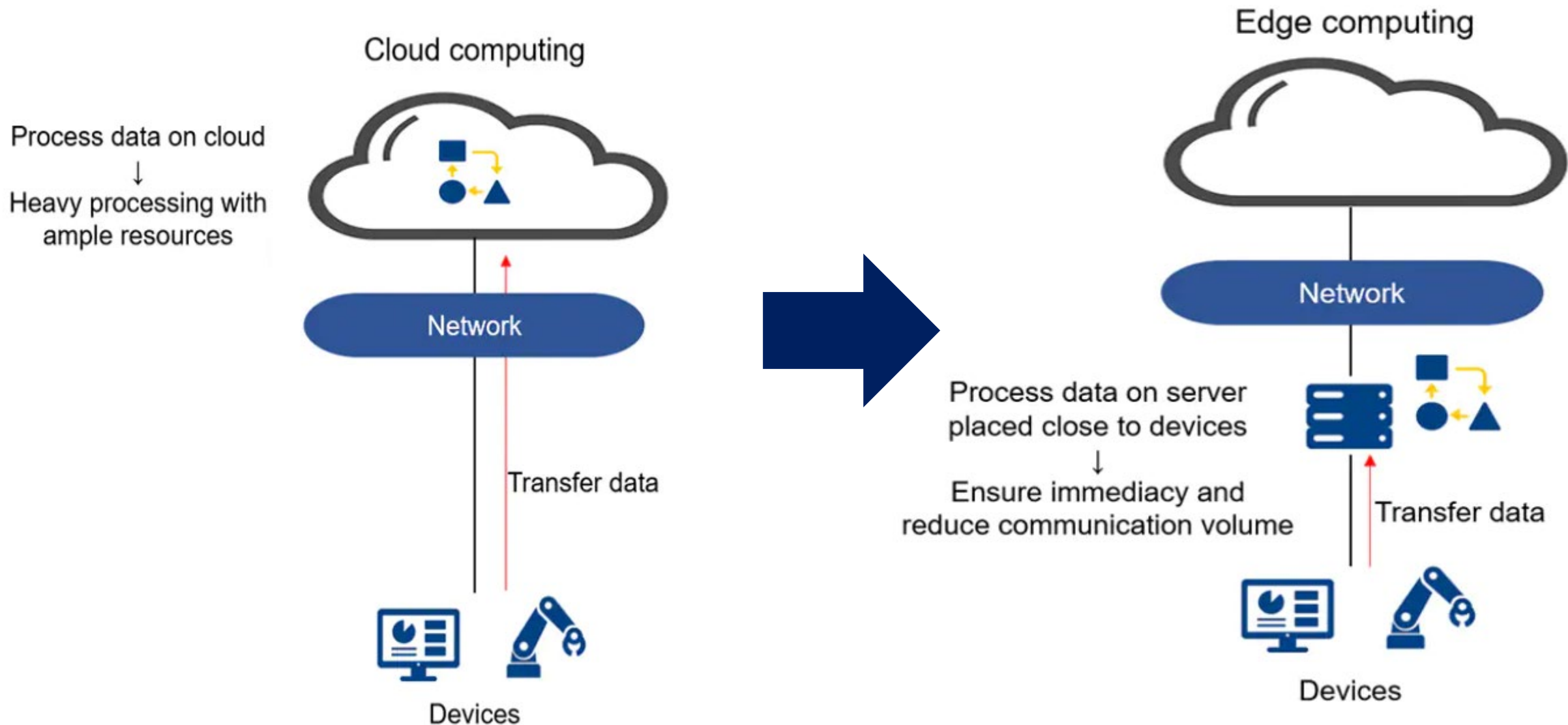
**Security and privacy** can be compromised by data leaving organisation's perimeter







# Model shift in IoT:

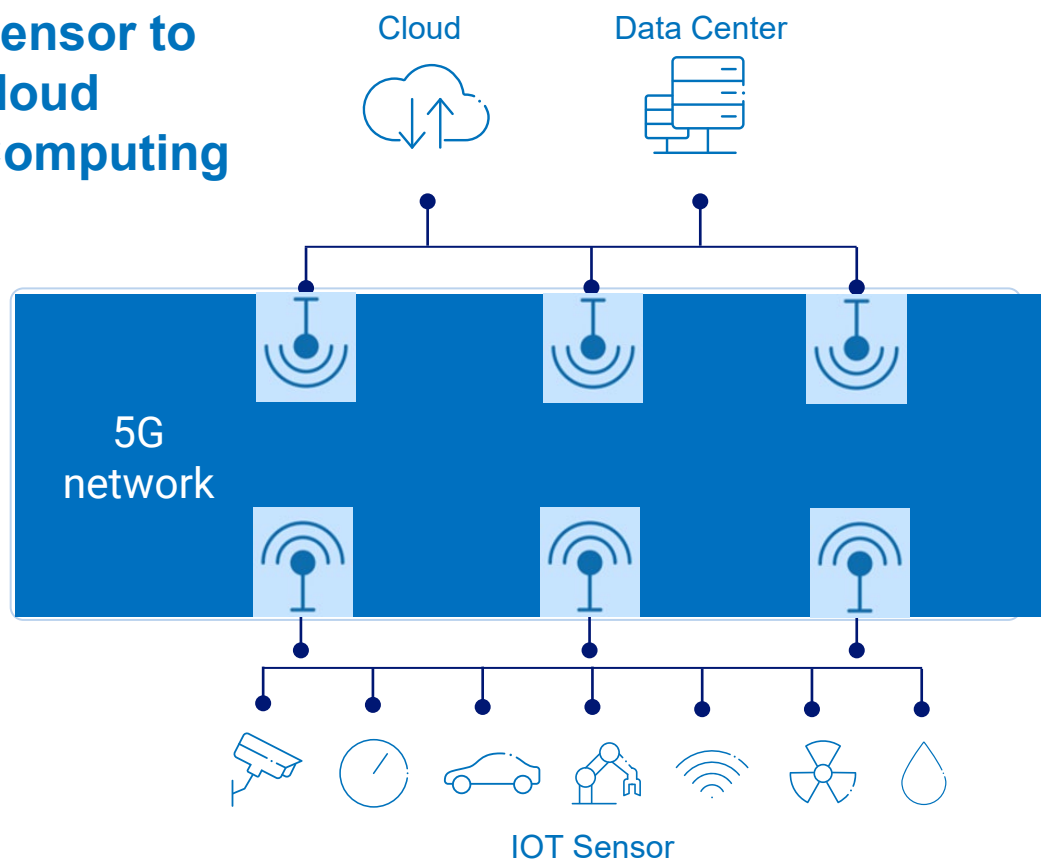




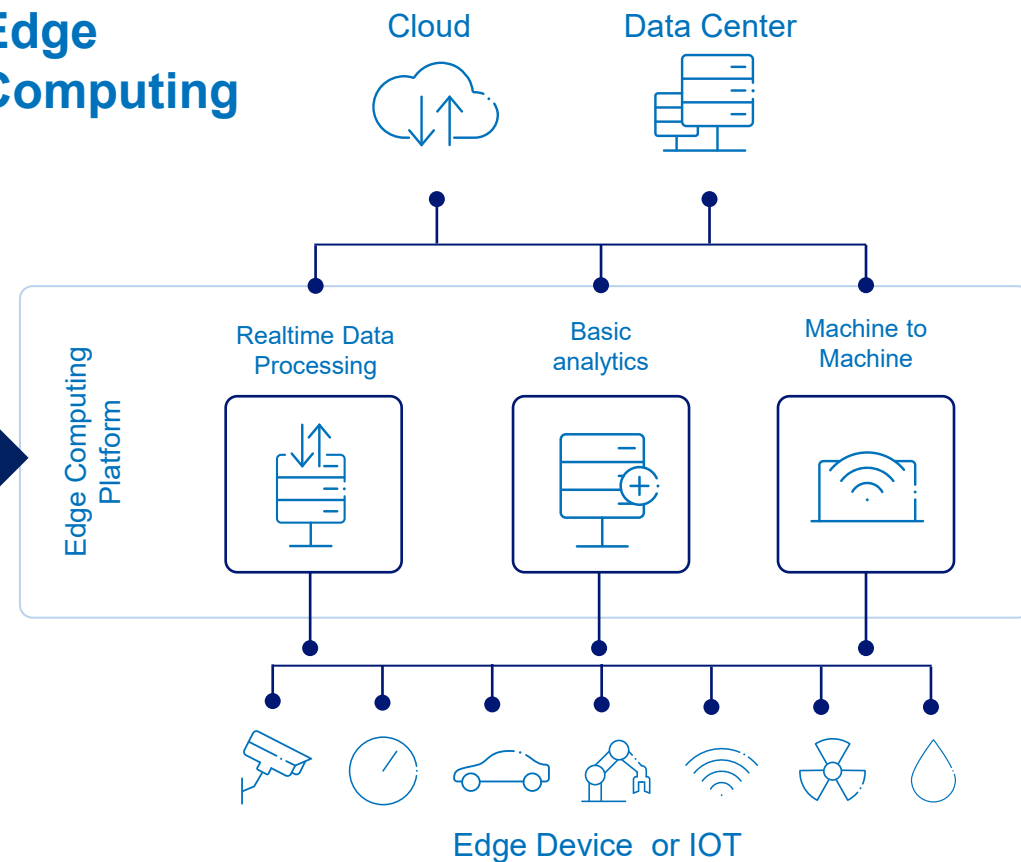
# The “iNTTerconnected” world

Data processed and decisions are made on-premise locally to drive security, efficiency and performance gains

## Sensor to cloud Computing



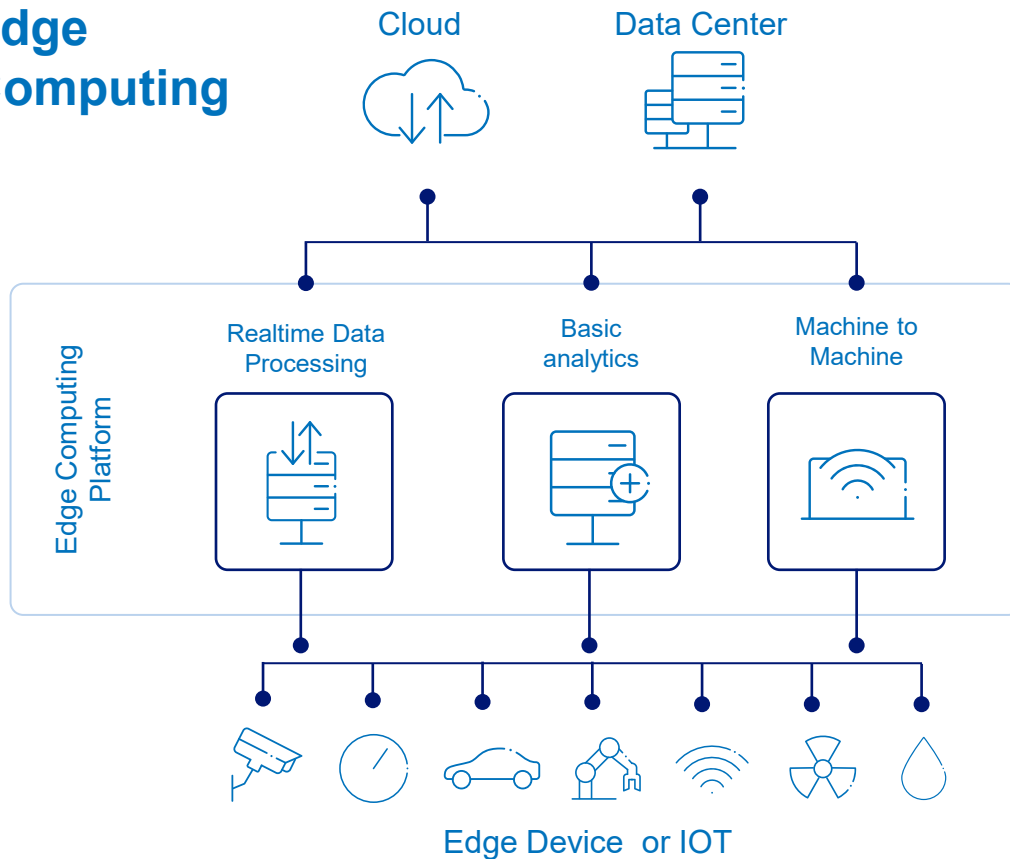
## Edge Computing



# What is “Edge”

Data processed and decisions are made on-premise locally to drive security, efficiency and performance gains

## Edge Computing



***By year-end 2023, 50% of large enterprises will have a documented edge computing strategy, compared to less than 5% in 2020.***

Source: Gartner Leading the Edge: Gartner's Initial Edge Hardware Infrastructure Forecast, June 2020



# Edge isn't new!



Intelligent Things



Smartphone/watch

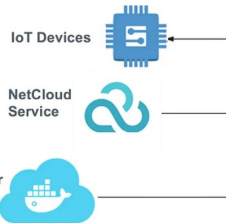
*How to managed communications?*

*How to manage remote applications?*

*How to manage remote devices?*



WiFi – (P) 5G convertor



Intelligent Gateways

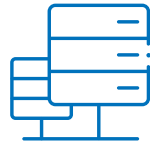


Remote servers

# NTT – Edge aaS Offering Portfolio



NTT Multicloud



HCI Edge Compute

1

## Edge Compute (EaaS)

On-Prem or near Prem

NTT P5G



2

## Edge connectivity (P5G NaaS)

P5G for security, low latency and high bandwidth



Factories



Robotics



Workplaces



IoT / IIoT Fleet



Industrial



Vision



Care

3

## Connected Devices (IoT)

IoT Sensors + Actuators + Applications

# Edge on water:







# Why NTT for Edge aaS

We bring differentiated capabilities to win in edge to cloud offering with SLA(s)....



Completeness : NTT is able to **land any client application into any location** – public cloud, private cloud, on-prem



Simplicity : NTT can **connect any edge location to any cloud location** using our intelligent and secure network fabric



Efficiency and Innovation : We can provide better **flexibility and fungibility in edge computing and analytics** given we deliver as-a-service

**Accelerate Vehicle Production with Co-Innovation**

**Reduce Carbon footprint & costs with high performance network**

**Improve Patient experience by helping automate clinician workflow**



# A turnkey Edge as a Service for:

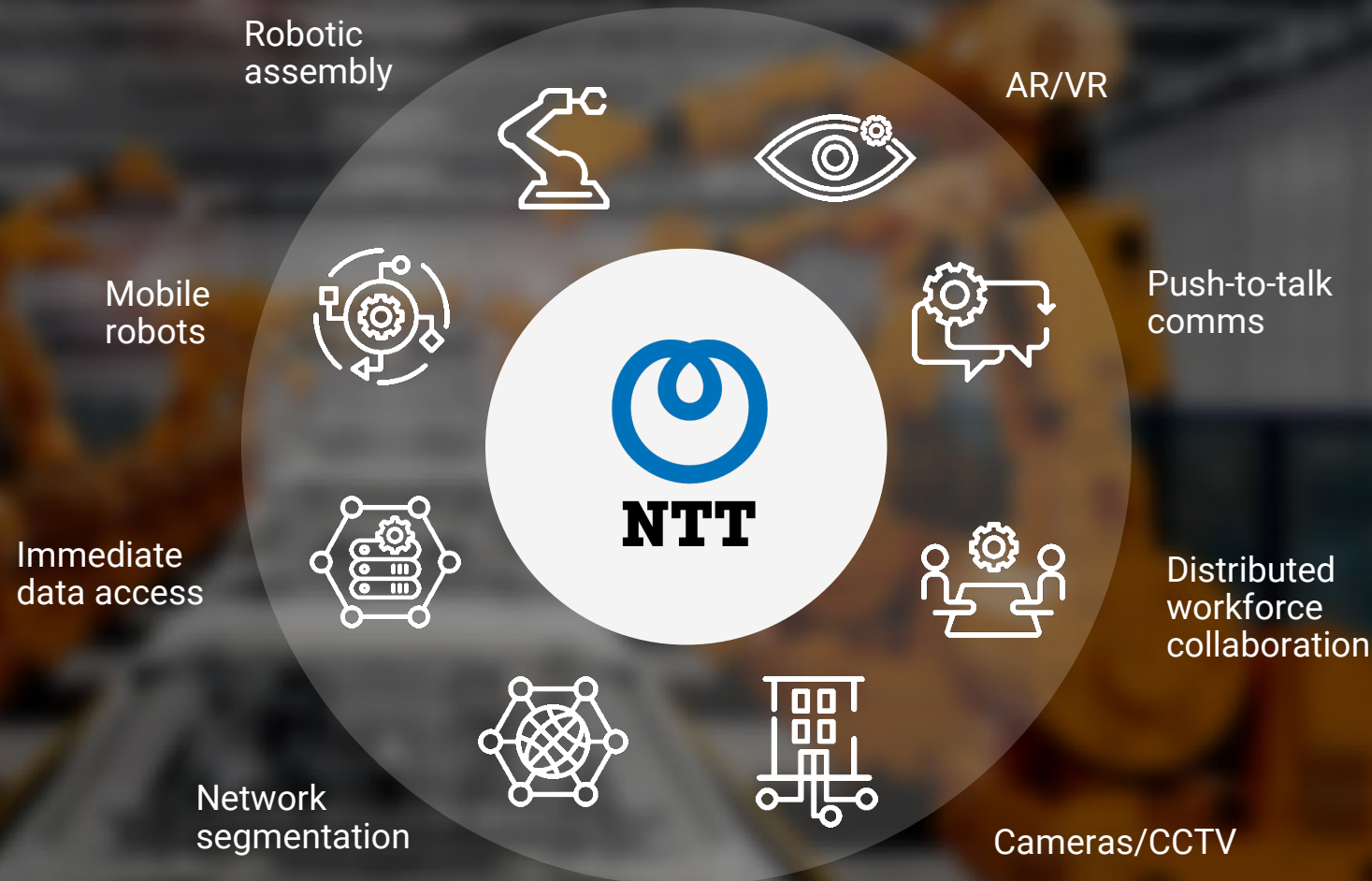


## manufacturing

## automotive

## healthcare

...







# Data Center BeLux Forum

Questions and answers?







Thank You!

