

Act of God, Human footprint & Data Center



Christian De Boeck – 15/09/2022

<http://www.SYNERGIT.be>

+32 (0) 2 347 59 71

info@synergit.be

Crisis?
What Crisis?



Crisis?
What Crisis?



COVID 19
2019



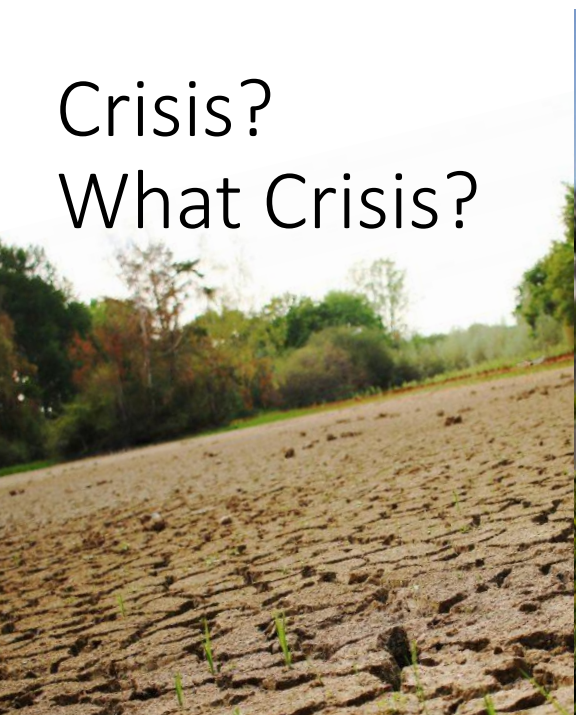
Crisis?
What Crisis?



Floods 2021

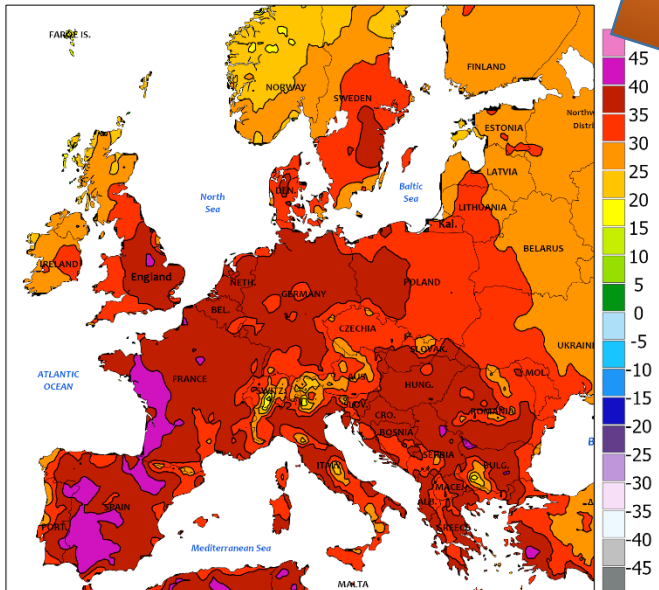


Crisis?
What Crisis?



Heatwave & Drought 2022

Extreme Maximum Temperature (C)
July 17 - 23, 2022



Crisis?
What Crisis?



Ukraine 2022

Crisis? What Crisis?



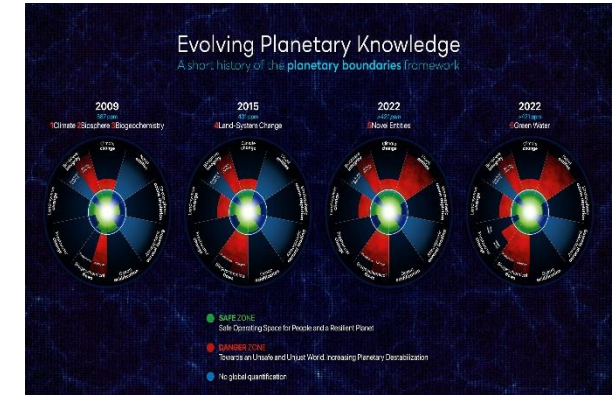
Cyber-resilience

Reporting / Paying
for emissions



Staffing - Motivation

Planet boundaries
17 SDG's



Social unrest - War

... and probably many more to come (economy slowdown,...)

Business Continuity / Resilience

IT-Service Continuity Management

**Assessments,
Audits &
Tests**

**Coaching, Mentoring &
Change Management**

Low Carbon Transition



Crisis?

What should I do?

Fight against climate changes:

- Onboard your staff, partners: Create awareness



Create Awareness



Crisis?

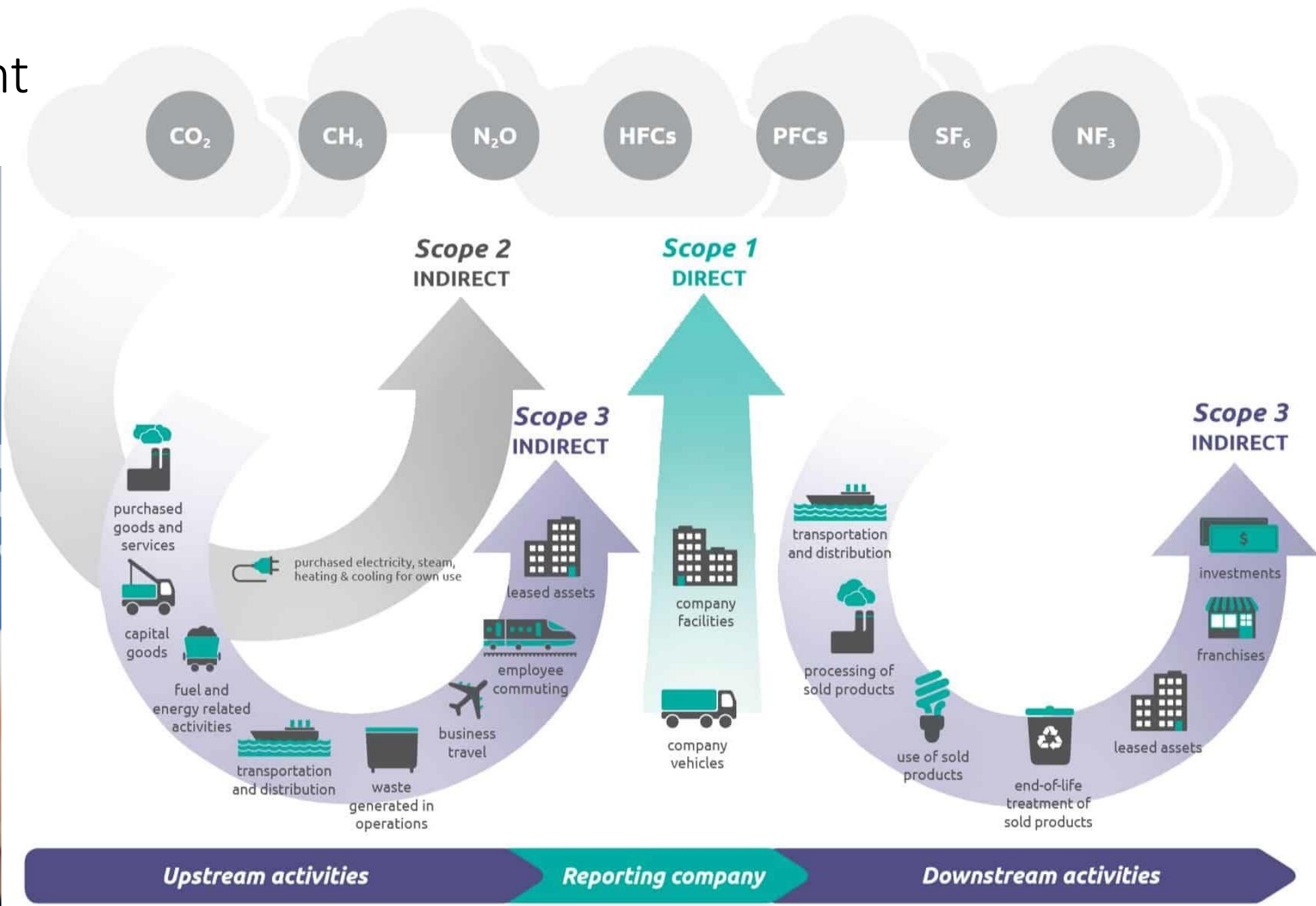
What should I do?

Fight against climate changes:

- ✓ Onboard your staff, partners: Create awareness
- Calculate, maintain and minimize your Carbon footprint



Carbon Footprint Reduction



Crisis?

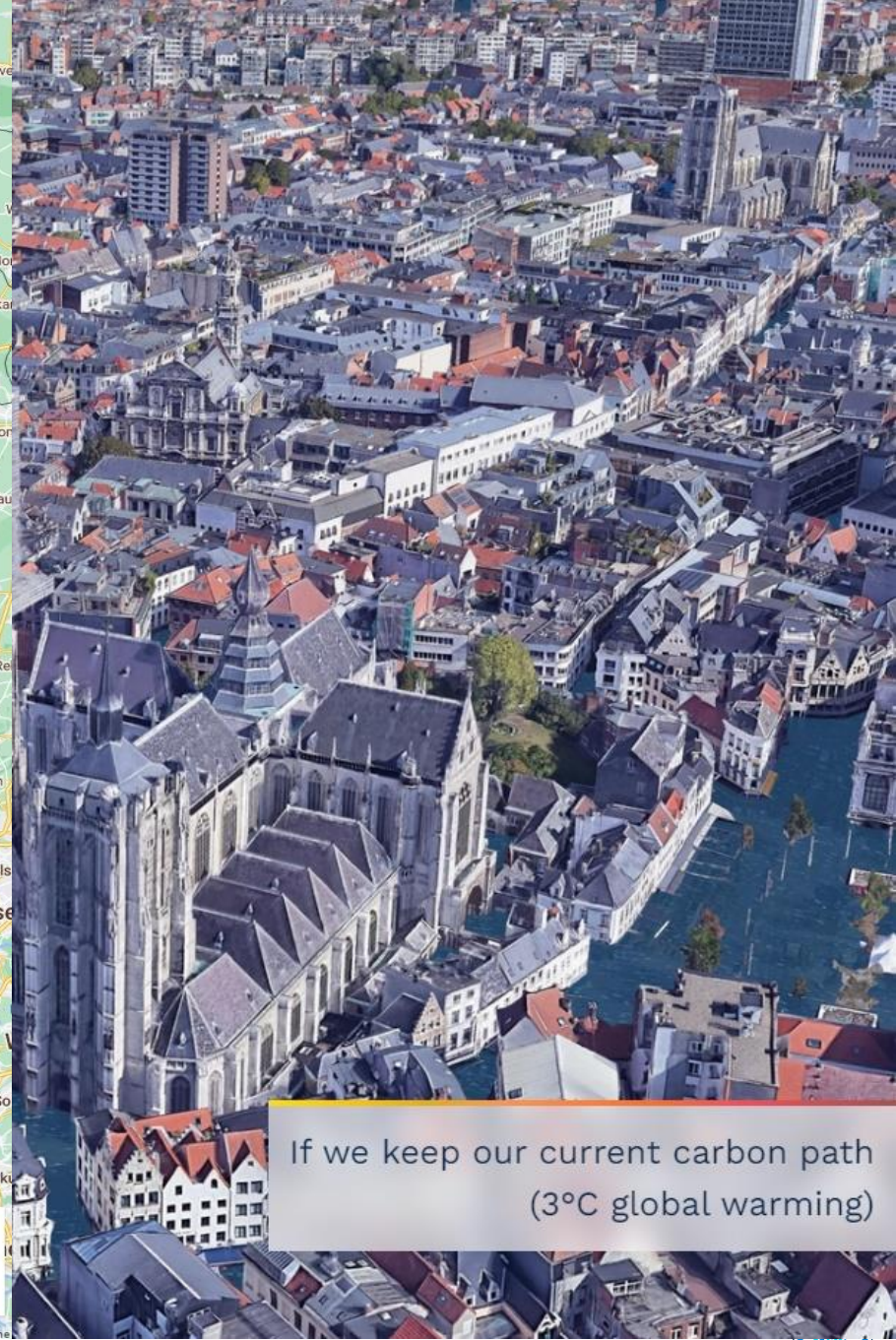
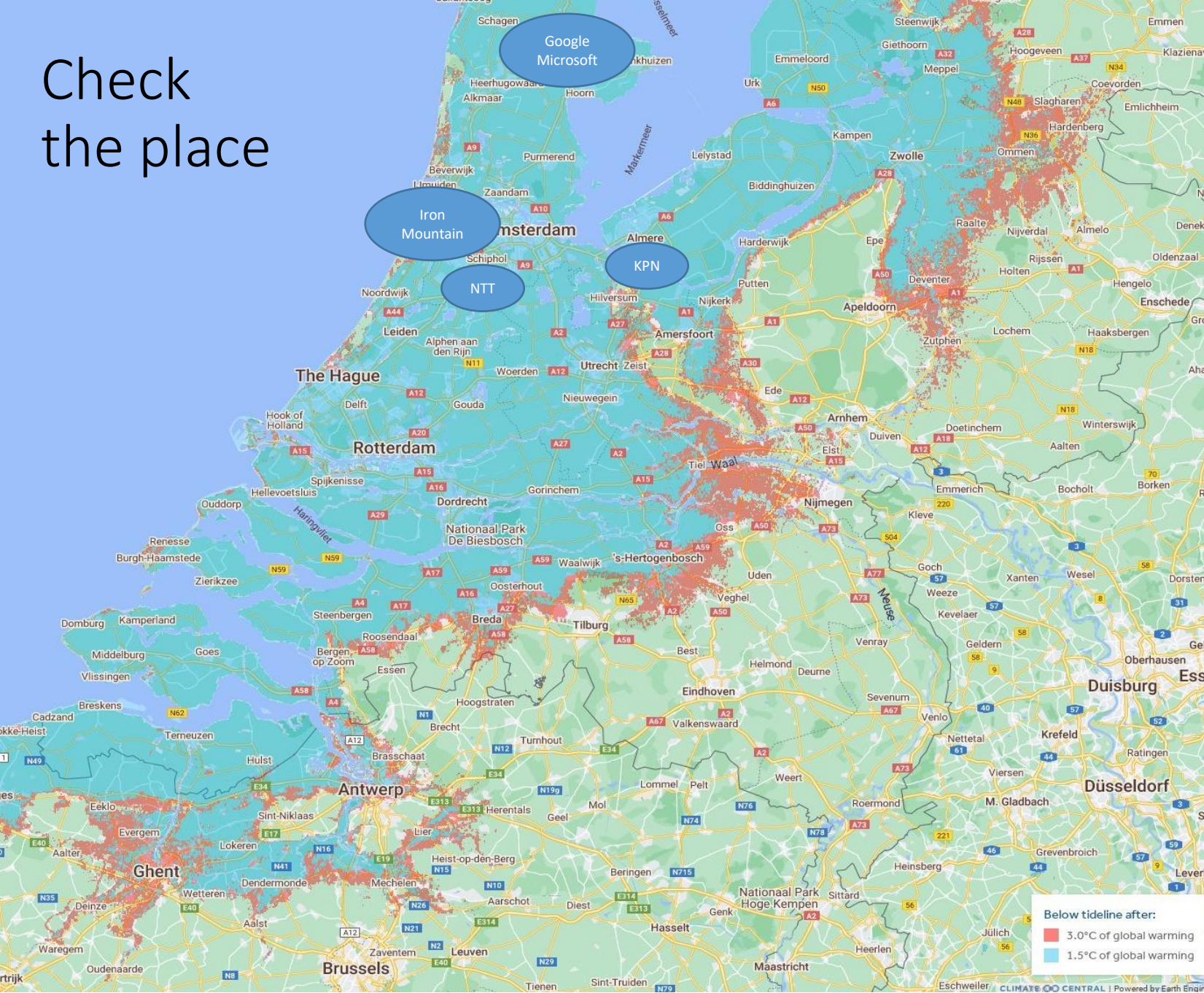
What should I do?

Fight against climate changes:

- ✓ Onboard your staff, partners: Create awareness
- ✓ Calculate, maintain and minimize your Carbon footprint
- Check your location(s)



Check the place



If we keep our current carbon path
(3°C global warming)

Crisis?

What should I do?

Fight against climate changes:

- ✓ Onboard your staff, partners: Create awareness
- ✓ Calculate, maintain and minimize your Carbon footprint
- ✓ Check your location(s)
- Minimize your storage (archive, clean-up, delete,...)



Crisis?

What should I do?

Fight against climate changes:

- ✓ Onboard your staff, partners: Create awareness
- ✓ Calculate, maintain and minimize your Carbon footprint
- ✓ Check your location(s)
- ✓ Minimize your storage (archive, clean up, delete,...)
- Modernize your IT infrastructure and facilities
- Slowdown the technology refresh rate
- Optimize and reuse existing resources

OR MOVE TO THE CLOUD?

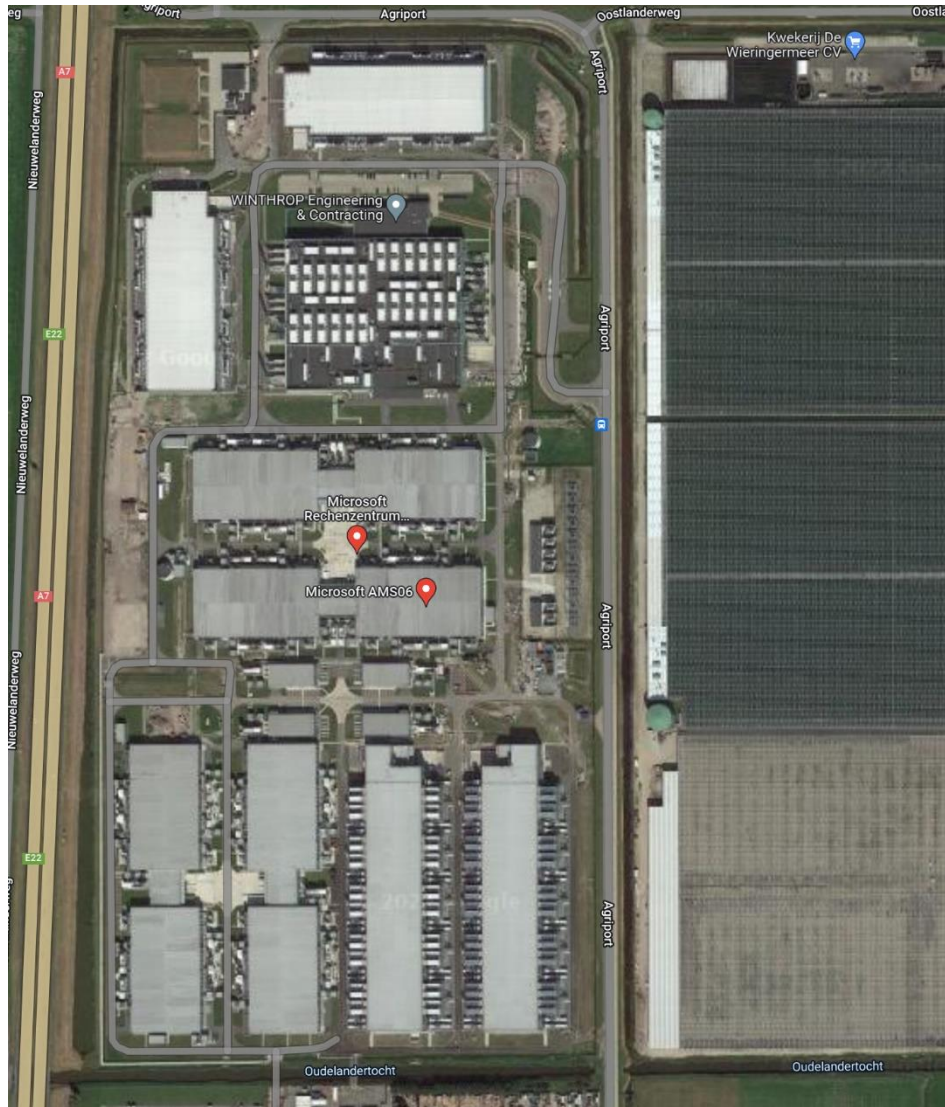


Move to the Cloud?

- ✓ CAPEX → OPEX
- ✓ No Data Center / infrastructure to maintain and operate
- ✓ Resources are optimized (sharing, pay-per-use options)
- ✓ More staff to manage and operate in the cloud
- ✓ No / limited cooling or electricity consumption



Move to the cloud?



- ⚠ Behind each Cloud there are physical components
- ⚠ Check the place(s)
- ⚠ Choose the right options
- ⚠ Act of God usually excluded
- ⚠ Carbon neutrality need careful review
- ⚠ Still accountable to report Scope 3 CO2 Emissions
- ⚠ Less in-deep knowledge of your situation
- ⚠ You're not deciding to declare a disaster
- ⚠ Price evolution is not fully under control
- ⚠ DC Tiering may decrease because of the rise of T°
- ⚠ Do you have an Exit Strategy?

Take away:

- Sustainability for Data Centers is a **MUST**
- Moving to the Cloud can help
- Benefits comes with some new risks
- No CO₂ offset (shift from scope 2 to scope 3)
- **Accountability remains yours !**



Thank You !

 +32 (0) 2 347 59 71

 info@synergite.be

<http://www.SYNERGIT.be>

